



Project Summary

GIS - Campus Mapping

PROJECT NAME AND LOCATION

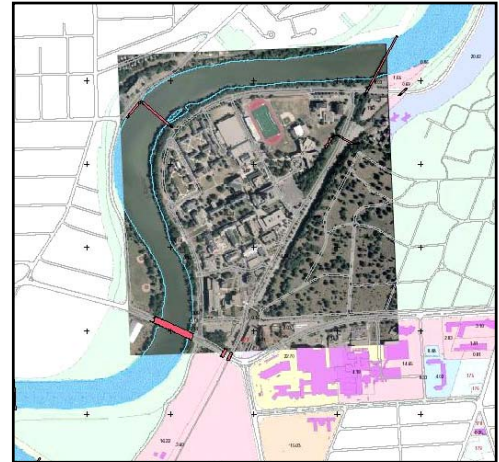
University of Rochester
Campus Mapping and GIS
Rochester, NY

PERFORMANCE DATA

Performed 100% of the work
Project fee: NA
Project completed in 1999

OWNER INFORMATION

University of Rochester
Rochester, NY



KEY PROJECT FEATURES

- ❑ Provided control surveys and aerial photography to create base mapping for a new GIS system for the entire University of Rochester campus.
- ❑ Produced detailed, accurate maps with attributed geographical features to facilitate data organization within the GIS system.
- ❑ Developed custom software to convert the original AutoCAD drawings into a GIS compatible format.

Erdman Anthony (**EA Maps, LLC**) teamed with Trudeau Architects to provide document management and GIS system implementation services for the University of Rochester. Our team provided the control survey to support base mapping, preparing twenty-four pre-painted targets for the survey control network, and utilized analytical aerotriangulation for secondary photo control. The aerial photography consisted of five lines and seventy-six exposures at a scale of 1 inch=400 feet, requiring a series of five northeast and southwest flight lines to cover the project area. Our project team conducted a field edit to ensure that all the relevant information was captured in the photography.

Upon completion of the aerial photography, our staff produced detailed, accurate maps for the entire campus. The maps included all structures, roads, manholes, parking areas, cross country power lines, fence lines, hydrants, and power poles. To assist with data organization, some attributes such as building names and geographical information was added to the map files. These highly accurate AutoCAD drawings were then converted into a GIS compatible format, using custom software developed by the Erdman Anthony (**EA Maps, LLC**) team. This facilitated importation into a unique GIS database that assisted the University with future planning and campus expansion projects.